

**SKY PUMPS TRADING EST.**

Pumps and Dewatering Specialists

CR No. 2059002916



مؤسسة سماء المضخات التجارية

متخصصون بضخ ونزح المياه

رقم السجل التجاري: ٢٠٥٩٠٠٢٩١٦

## **SKY PUMP MODEL SKHS-200-520**



**Model : SKHS-200-520**

### **ENGINE SPECIFICATIONS**

Diesel Engine : FPT/IVECO/VOLVO PENTA or Equivalent

Power : 330KW/400HP/1500 -1800RPM (Water Cooled)

### **PUMP SPECIFICATIONS**

Max. Head : 110M

Max. Flow : 1080m<sup>3</sup>/h

NPSH : 7.40M

Efficiency : 84%

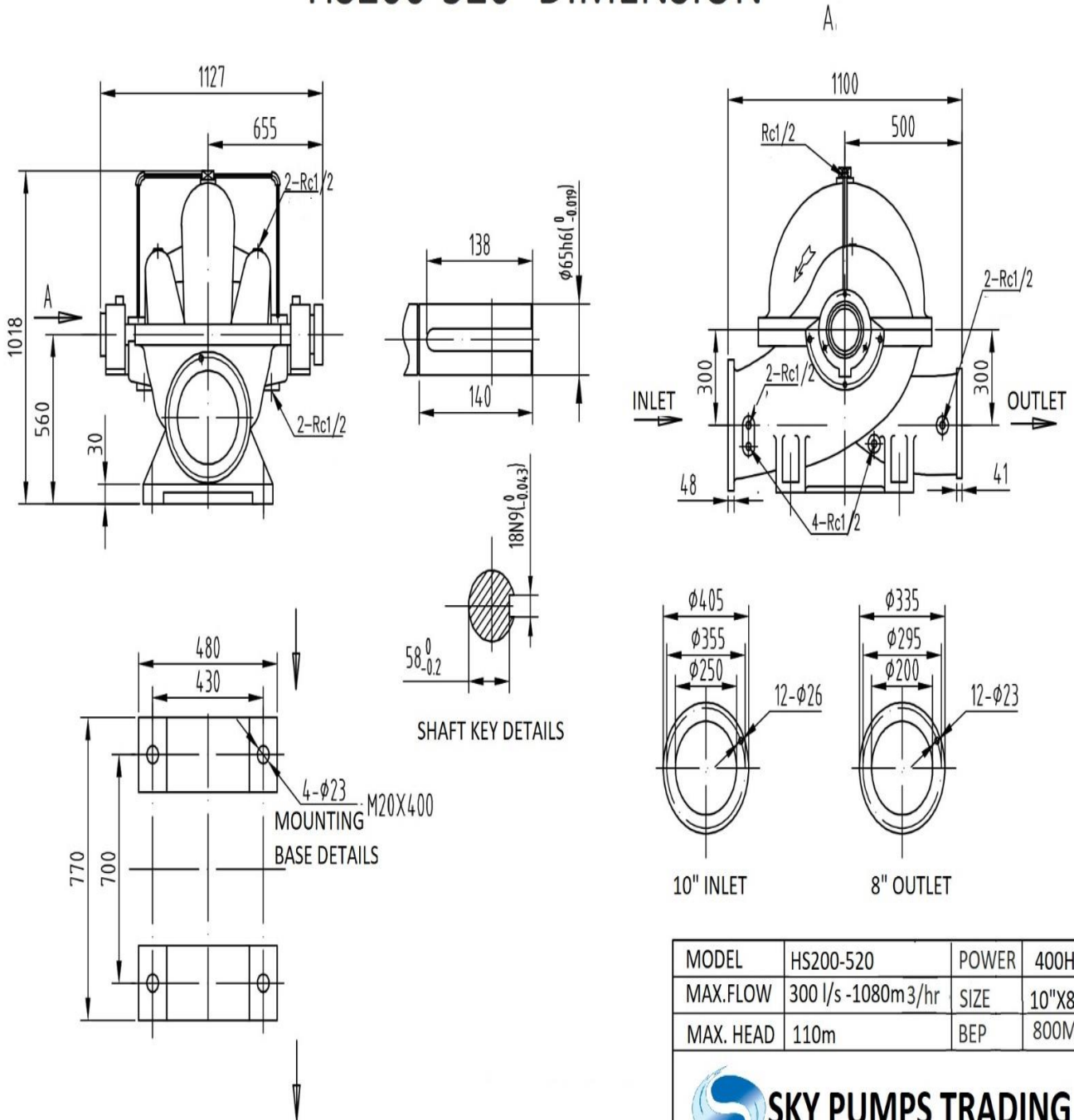
Material : Stainless Steel , Grade – SS2205

Metal Base & Coupling

Assembled in KSA



## HS200-520 - DIMENSION



MODEL	HS200-520	POWER	400HP
MAX.FLOW	300 l/s -1080m <sup>3</sup> /hr	SIZE	10"X8"
MAX. HEAD	110m	BEP	800M3@80m



**SKY PUMPS TRADING EST.**



HS200-520

1450 r/min

