

## SKY PUMPS EST.

Pumps and Dewatering Specialists

CR No. 2059002916

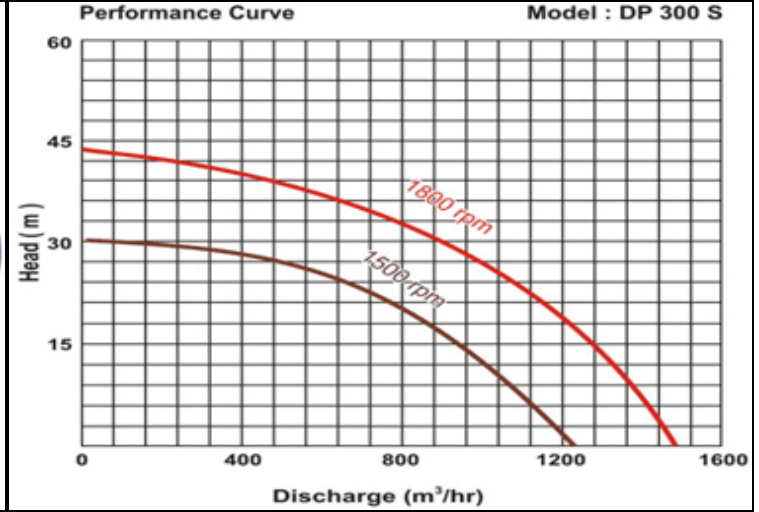
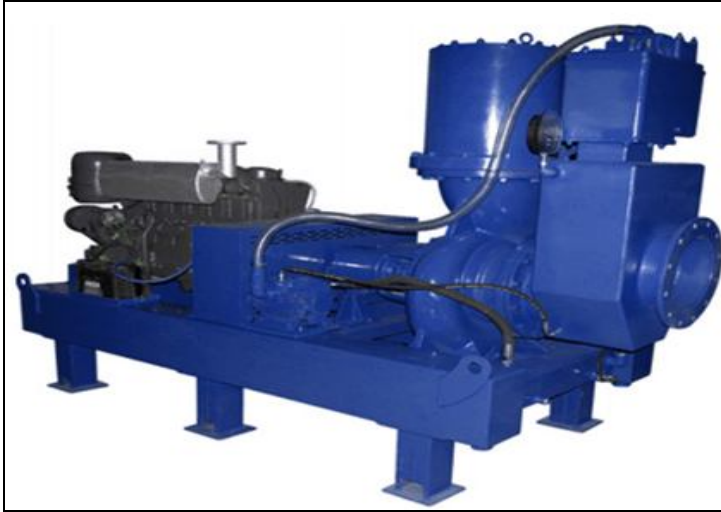


مؤسسة سماء المضخات

متخصصون بضخ ونزح المياه

رقم السجل التجاري: ٢٠٥٩٠٠٢٩١٦

## SKY MODEL- DP300S / 12" DEWATERING PUMP



SKY 12" auto priming dewatering pump also can be used for Sewage or Sewer by-pass is the general purpose pump set designed for high volume and medium head. Excellent performance in sewage, irrigation, sump pumping, transfer and Sewer-by- pass.

## PUMP SPECIFICATIONS

<b>Performance</b> <ul style="list-style-type: none"><li>Maximum Discharge 1500 m<sup>3</sup>/ hr</li><li>Maximum Head 43 m</li><li>Maximum Particle Size 70 mm</li></ul>	<b>Pump Connections</b> <ul style="list-style-type: none"><li>Suction 300 mm</li><li>Discharge 300 mm</li><li>Miller type couplings</li><li>Total weight 2500 kg</li></ul>	<b>Fuel Tank</b> <ul style="list-style-type: none"><li>Integrated part of chassis, MS fabricated with four wheel site trailer or skid mounting.</li><li>320 Liters Capacity</li><li>50 hours + runtime</li></ul>	<b>Prime mover</b> <ul style="list-style-type: none"><li>Standard Deutz F6L912 producing 74 kw at 1800 rpm.</li></ul>
<b>Priming System</b> <ul style="list-style-type: none"><li>Flood lubricated rotary vacuum pump of minimum displacement 70 CFM incorporating non-return valve.</li></ul>	<b>Shaft Sealing</b> <ul style="list-style-type: none"><li>Spring loaded Gland packing arrangement</li><li>Single ring of packing</li><li>Easy Re-packing</li><li>No adjustment is required</li><li>Double side Mechanical Seal spring loaded bellow type with oil bath cooling is optional.</li></ul>	<b>Materials of construction</b> <ul style="list-style-type: none"><li>Impeller &amp; Stuffing box : Bronze</li><li>Pump Shaft : SS316</li><li>Volute Casing : CI</li><li>Vacuum Pump Rotor : SG</li><li>Priming tank &amp; Discharge head : MS / SS316</li></ul>	
<b>Features:</b> <ul style="list-style-type: none"><li>The vacuum system allows the pump to prime and re-prime automatically.</li><li>Spring loaded gland packing arrangement easy to re-packing .No adjustment is required.</li><li>Solid handling up to 3" ( 75mm).</li><li>Ceramic coated volute casing.</li><li>Anti Corrosive epoxy zinc phosphate base coating and epoxy scratch resistant anti corrosive ceramic top coat painting for the pump.</li></ul>			
Doc- Sky DP300S	Rev. 1	Control No.-GP300M	Approved: SS